

New version of Home Made Grinding Jig

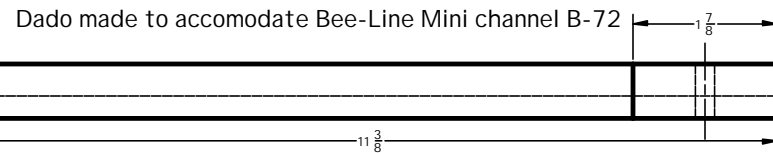
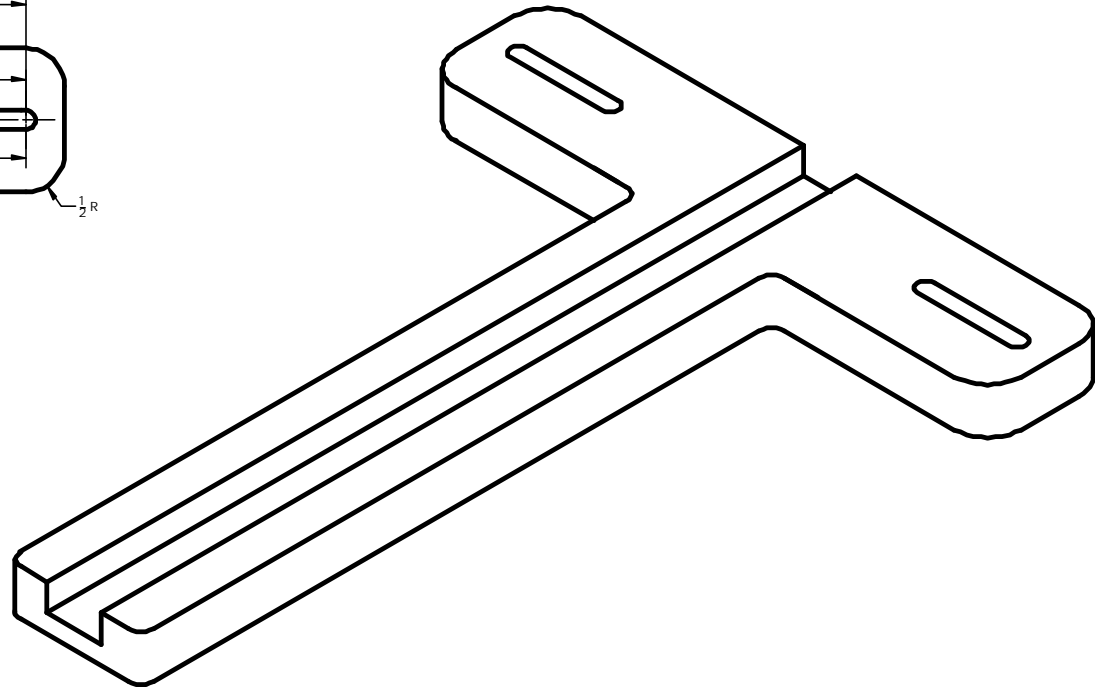
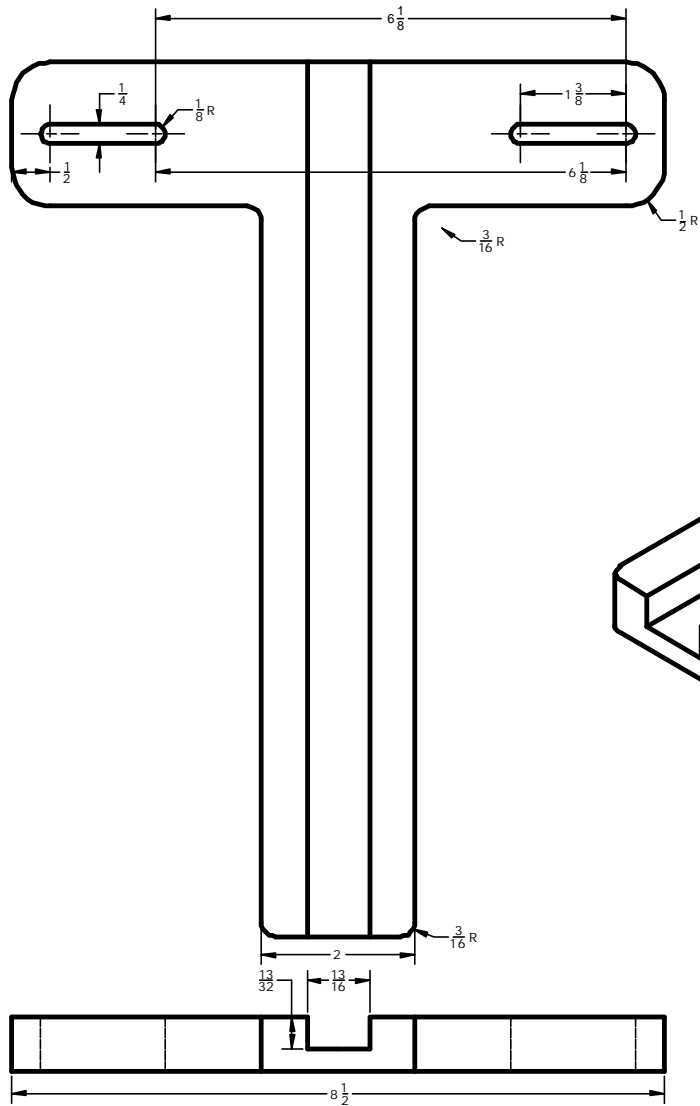


This is a picture of the “New and Improved Version” (Sounds like a soap add on TV!). My friend Claude bought some used gouges and they were too short to sharpen with his jig so I modified the plans. It gives more room for a big handle close to the jig and almost 1” more to sharpen. That should keep him happy for a while! If he woodturn’s more than he sharpens... The travel and angle of the jig are exactly the same for both models.

Both plans come in the “Bundle”, just decide to print or not, build or not, turn or not, chips or nuts...

Have fun and work safely!

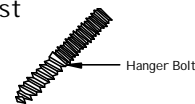
Jean Michel.
2002-03-24



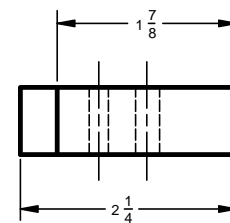
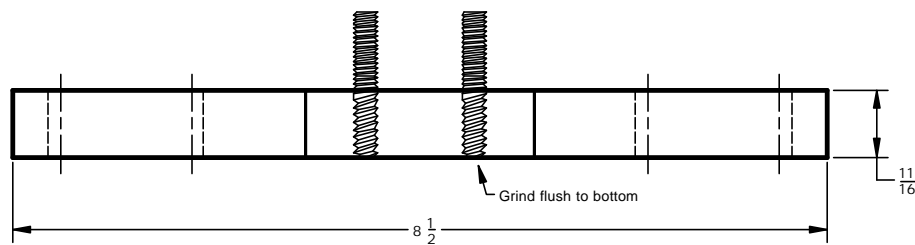
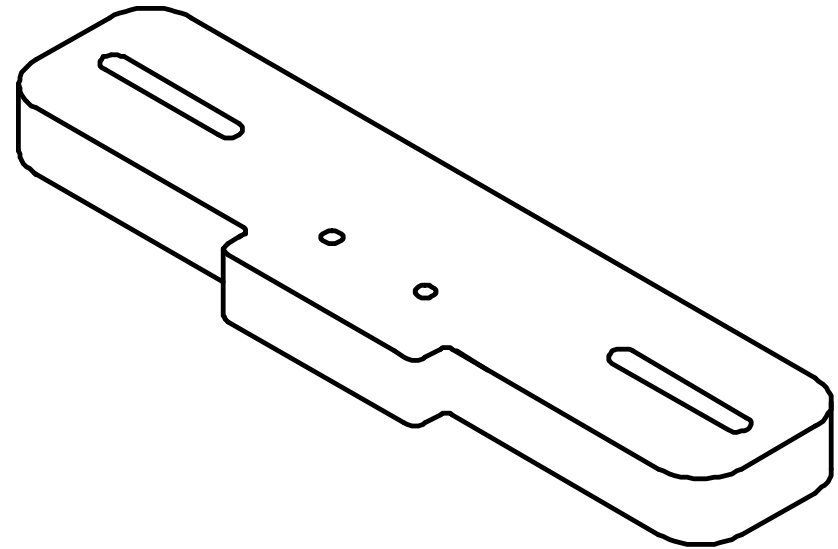
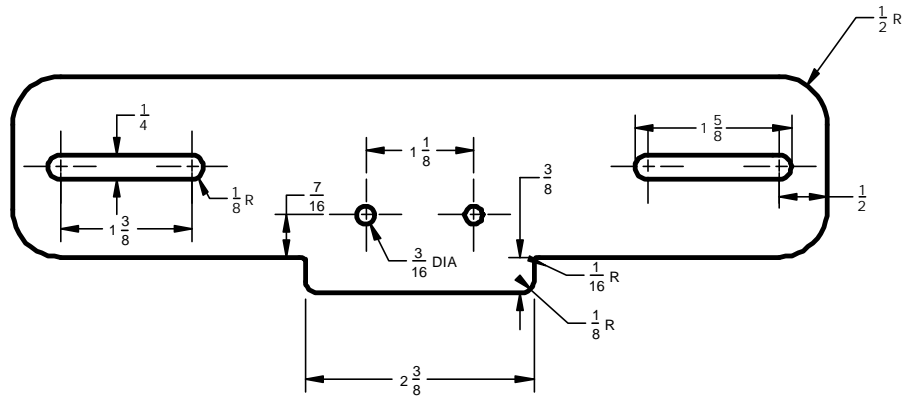
NOTE:

B-72 Mini Channel is held with small #6-32 screws 3/16" long and T-Nuts.
 T-Nuts must be grinded shorter to fit and recessed in the wood. Mini Channel must be drilled and tapered to recess bolt heads.

T Holder is held to bench with Hanger Bolts that are 1/4" screws that have a machined bolt threaded head 1/4"-20 with wing nuts or other means of attachment 1/4" in DIA. 6 1/8" apart and centering the jig to the grinder wheel.



Toolrest T holder (Grinder)		
Jean Michel	1" = 2.5" In Deltacad	2001-11-20
Toolrest holder for jigs & tools.		
Baltic Birch 11/16" (18mm)	1 of 1	

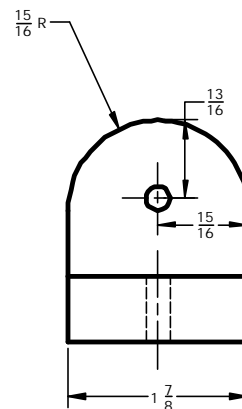
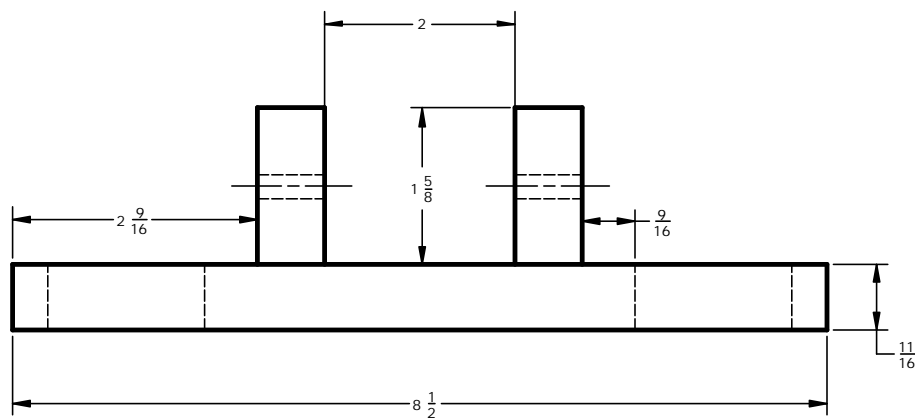
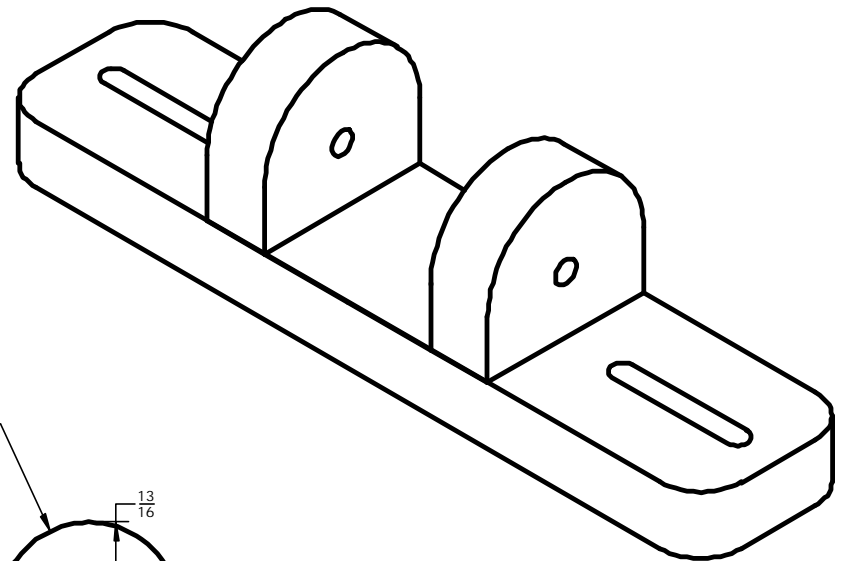
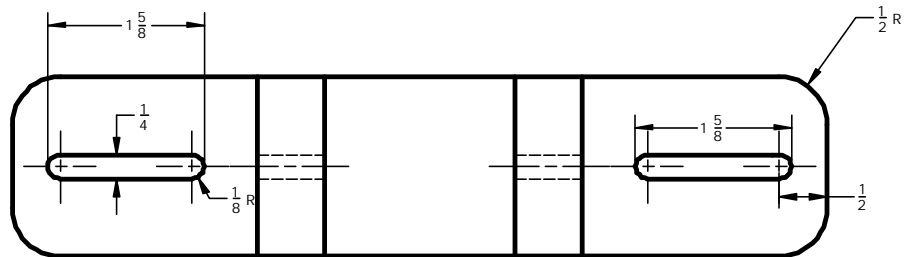


NOTE: The Base for the Veritas tool rest is held to bench with Hanger Bolts, they are 1/4" wood screws that have a machined bolt threaded head 1/4"-20 with wing nuts or other mean of attachment 1/4" in DIA.

This tool rest is used to true the stones on the grinders with it's Veritas Grinding Jig and Diamond point. Also used to grind wood chisels to grind wood chisels



Base for Veritas Tool Rest		
Jean Michel	1" = 2"	2002-01-13
Hold down base for Veritas Tool Rest		
Baltic Birch 11/16" (18mm)	1 of 1	



NOTE: The Pivot Holder is held to bench with Hanger Bolts, they are 1/4" screws that have a machined bolt threaded head 1/4"-20 with wing nuts or other mean of attachement 1/4" in DIA.



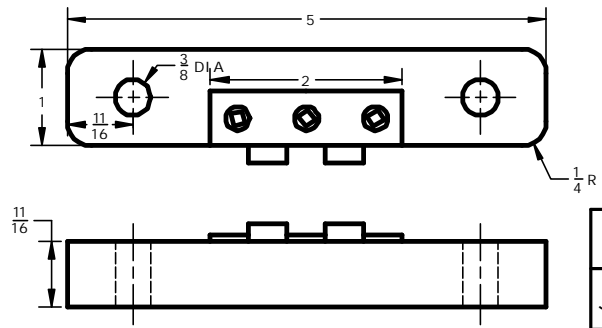
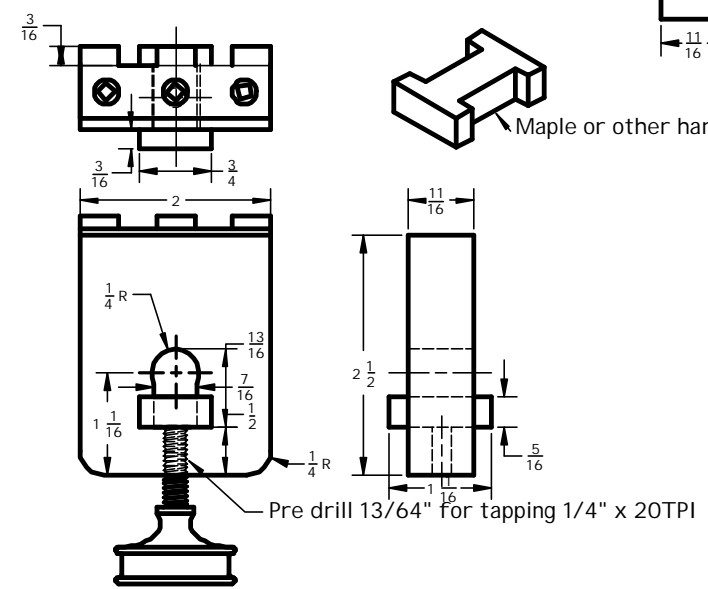
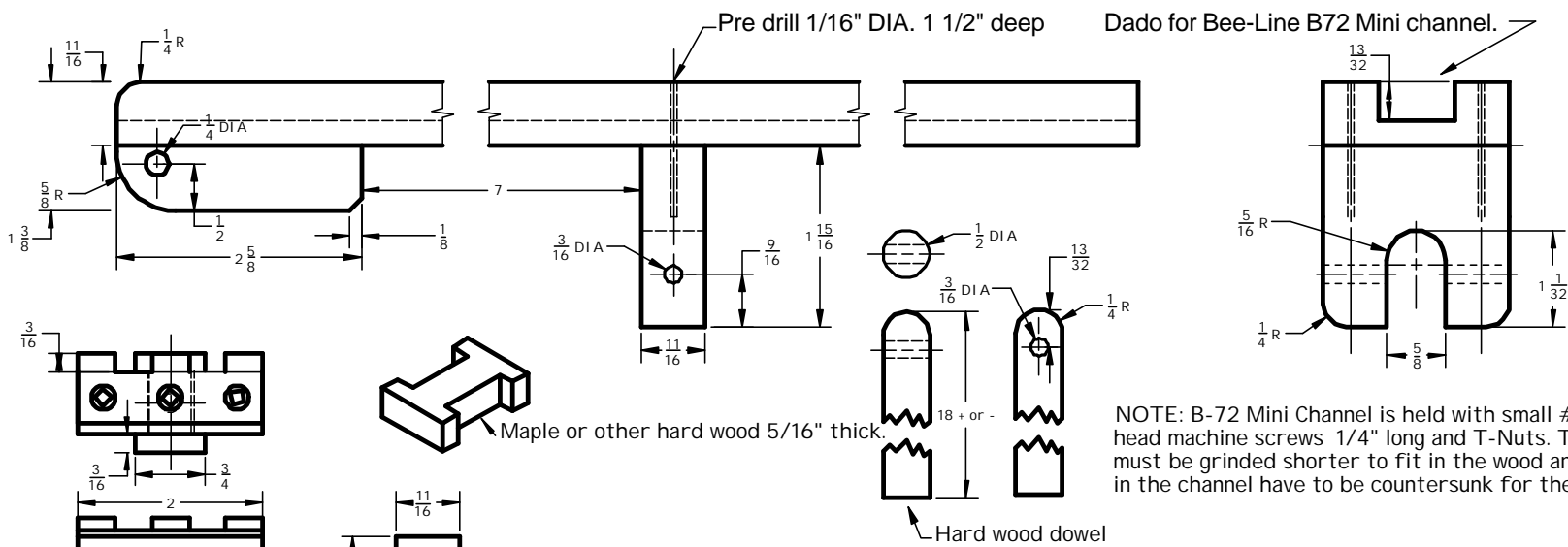
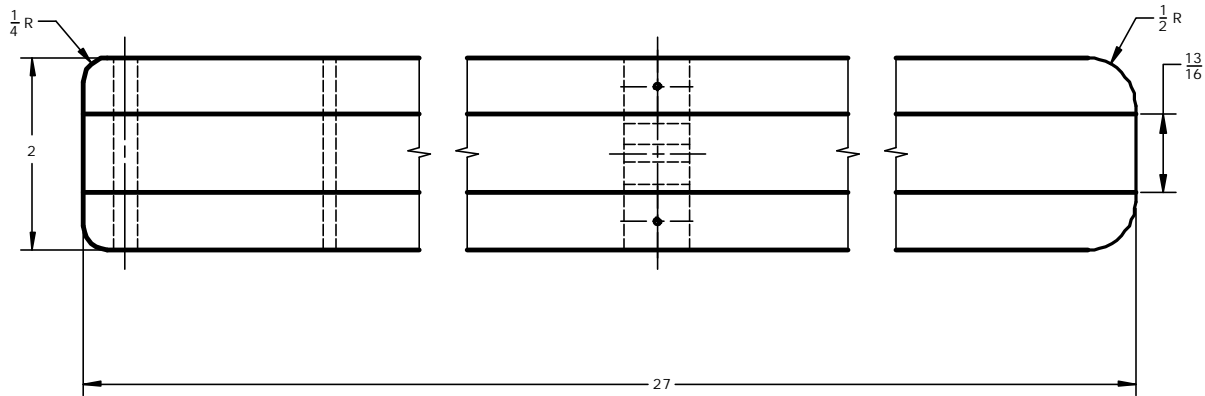
Pivot point for pivoted holder

Jean Michel | 1" = 2" | 2001-11-20

Hold down hinge for pivoted holder

Baltic Birch 11/16" (18mm)

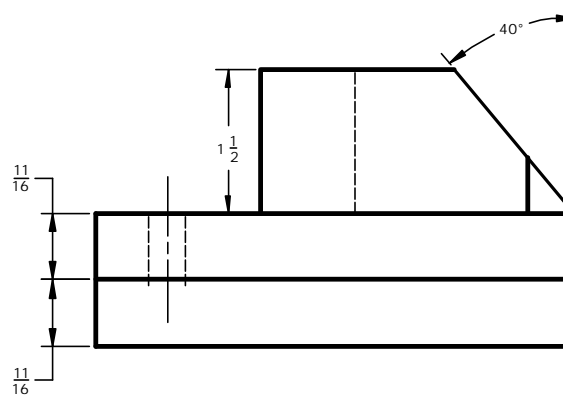
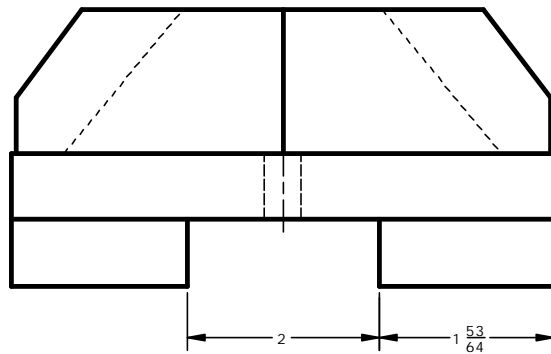
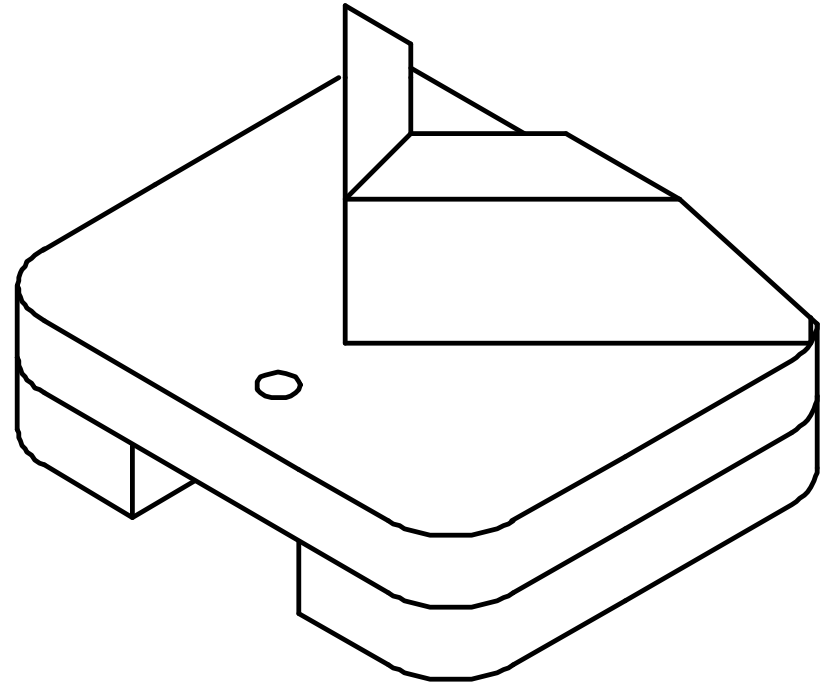
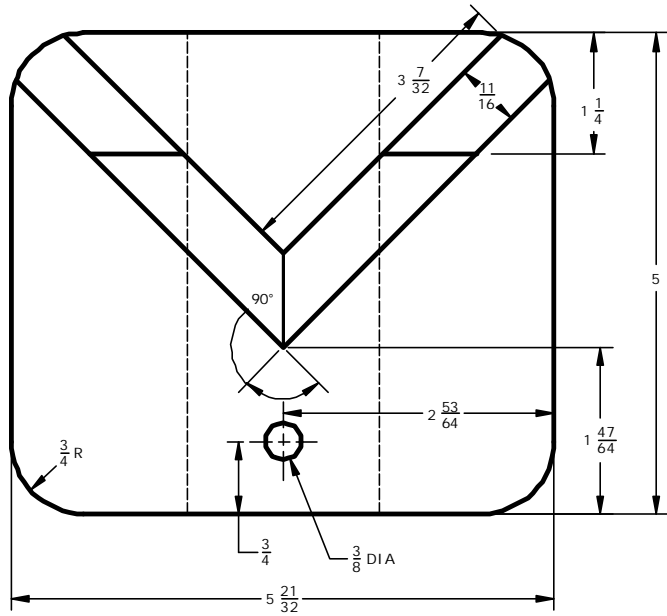
1 of 1



NOTE: B-72 Mini Channel is held with small #6-32 flat head machine screws 1/4" long and T-Nuts. T-Nuts must be grinded shorter to fit in the wood and the holes in the channel have to be countersunk for the screw heads.

Hinged adjustable lock for height of pivoting holder
 Held with 3/8" x 1 1/4" carriage bolts grinded with two flats
 to enter in B-72 Mini Channel screwed head down under grinder bench

Pivoting jig holder (Grinder)		
Jean Michel	1" = 2"	2001-11-20
Pivoting holder for grinding jigs.		
Baltic Birch 11/16" (18mm)	1 of 1	



Note: Held down with 3/8" DIA. x 1 1/4" long carriage bolts with head grinded with two flats to fit in Bee Line B-72 Mini channel.

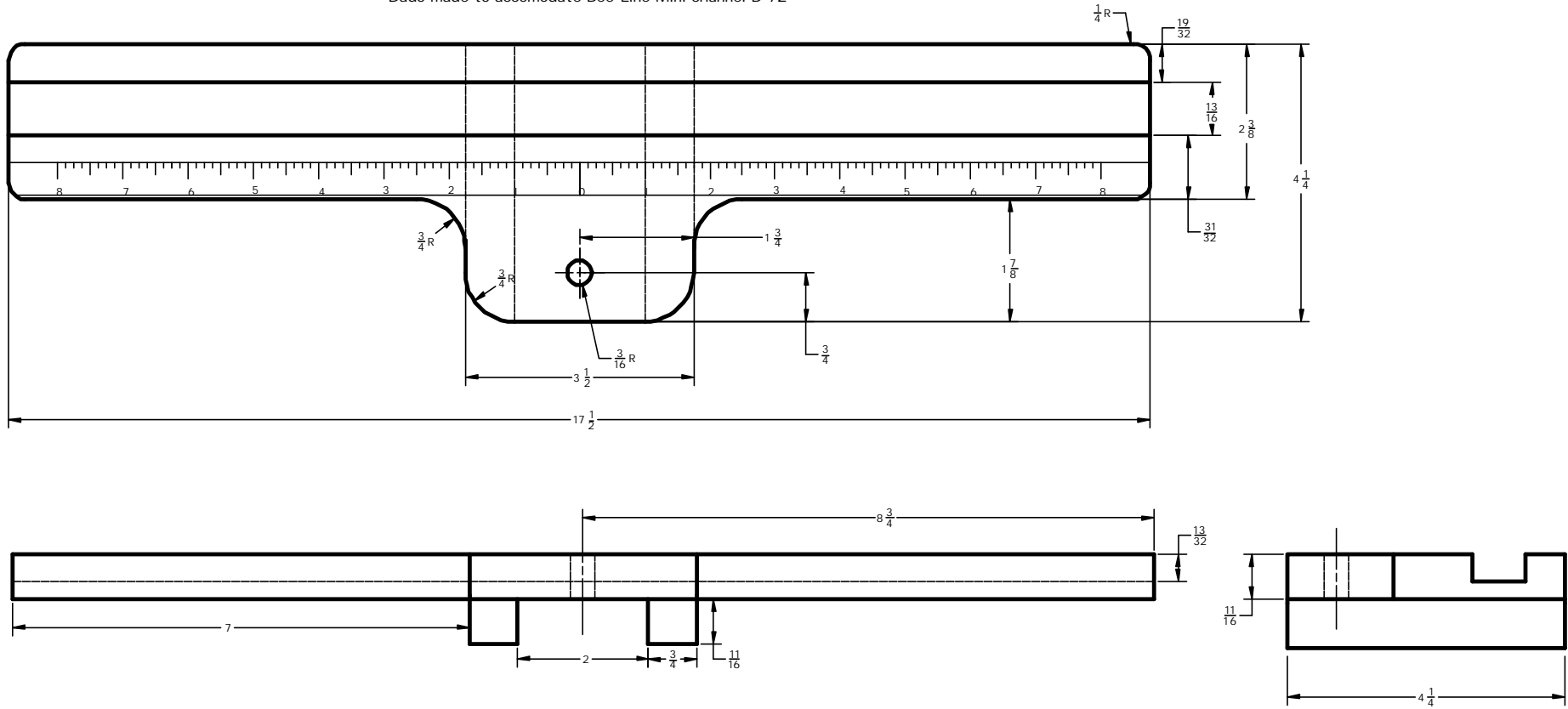
Gouge handle and jig rest

Jean Michel | 1" = 2" | 2001-11-20
1 in Deltacad

Jig support and gouge handle holder.

Baltic Birch 11/16" (18mm) | 1 of 1

Dado made to accomodate Bee-Line Mini channel B-72



Note: Held down with $\frac{3}{8}$ " DIA. x $1\frac{1}{4}$ " long carriage bolts with head grinded with two flats to fit in Bee Line B-72 Mini channel.

Skewchisel rest holder

Jean Michel

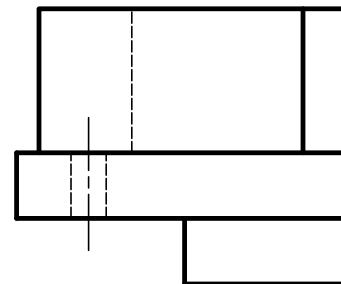
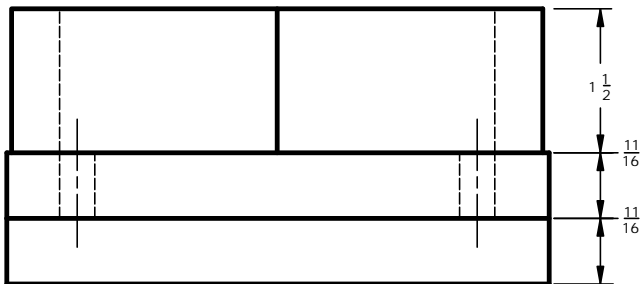
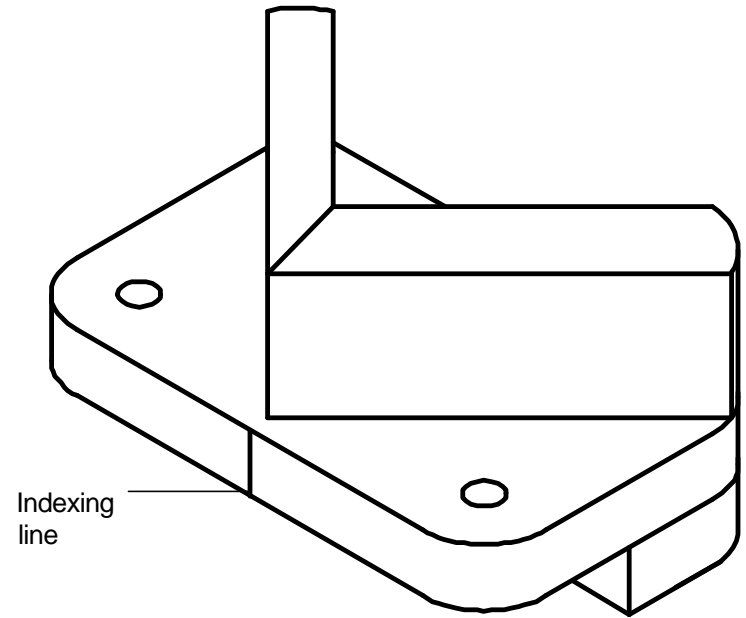
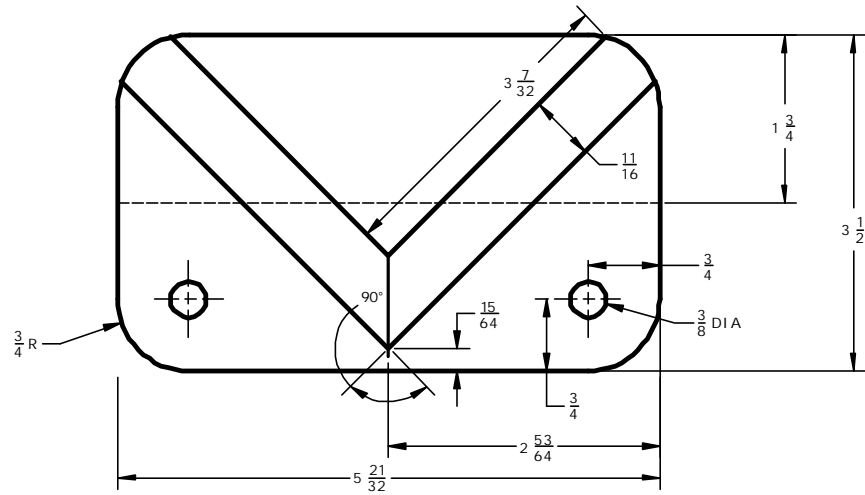
1" = 2.5"
In Deltacad

2001-11-20

Holds skew chisels handle rests.

Baltic Birch $11/16$ " (18mm)

1 of 1



Note: Held down with $\frac{3}{8}$ " DIA. x $1 \frac{1}{4}$ " long carriage bolts with head grinded with two flats to fit in B-72 Mini channel.

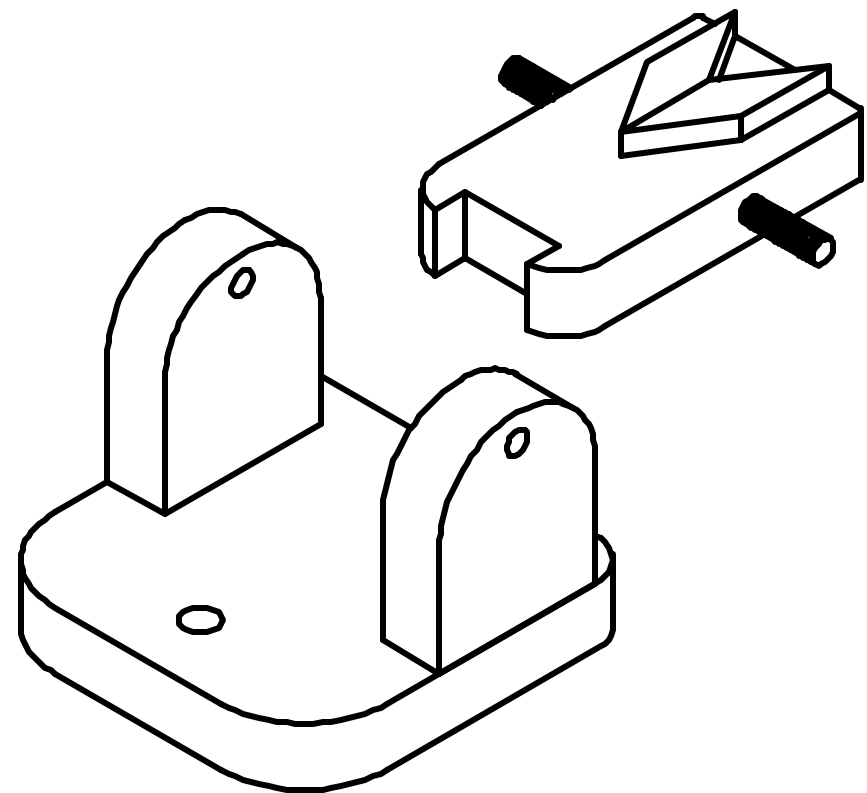
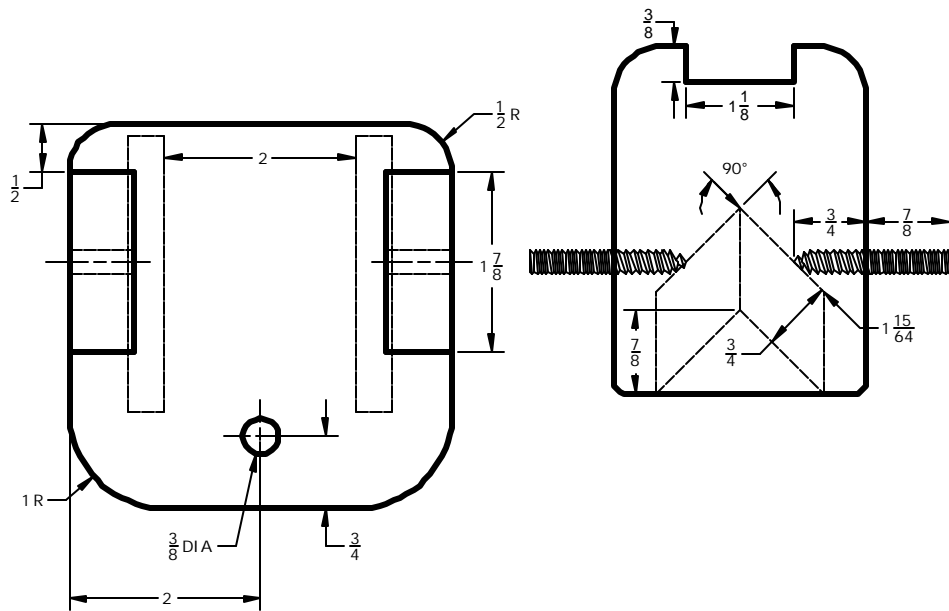
Skew chisels handle rest

Jean Michel | 1" = 2" | 2001-11-20

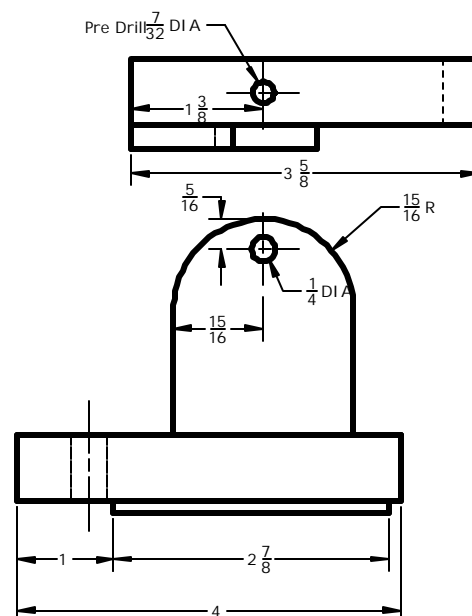
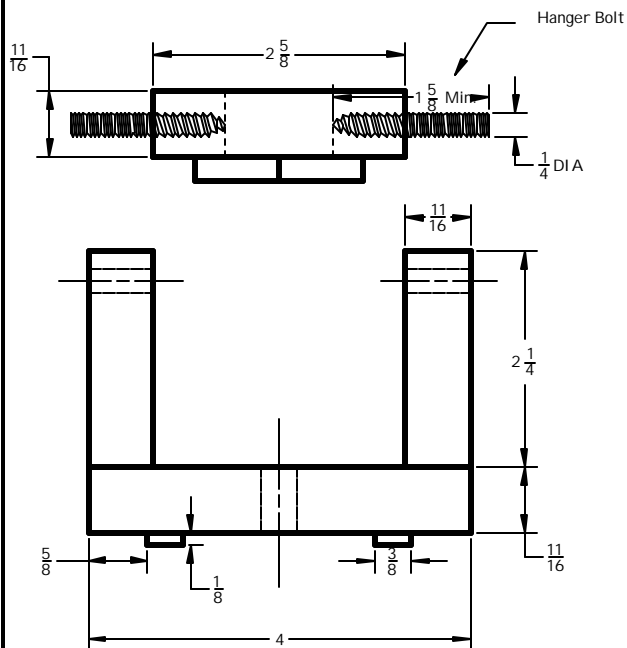
Base (2 needed) for the adjustable jig for skew chisels.

Baltic Birch $\frac{11}{16}$ " (18mm)

1 of 1

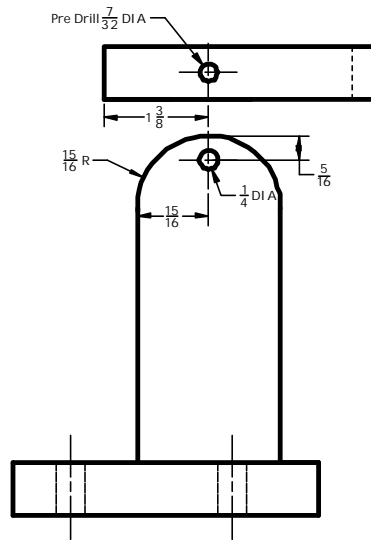
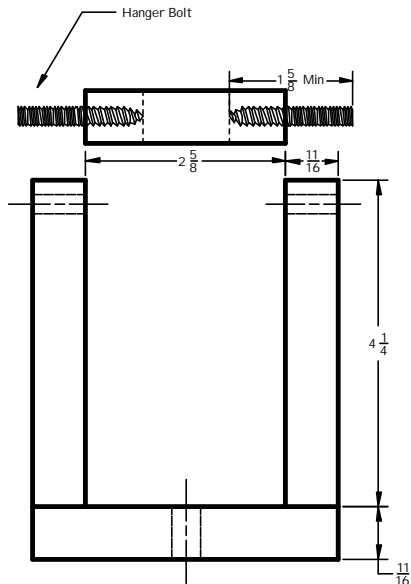
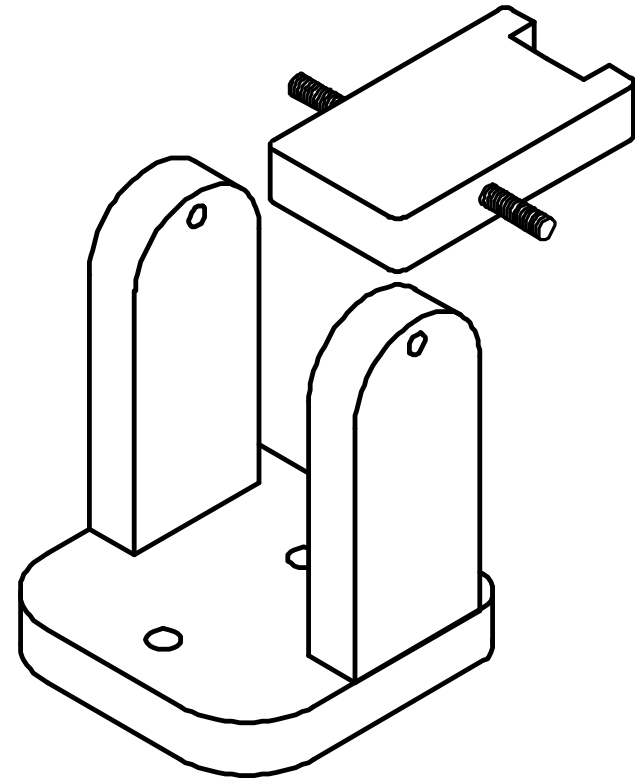
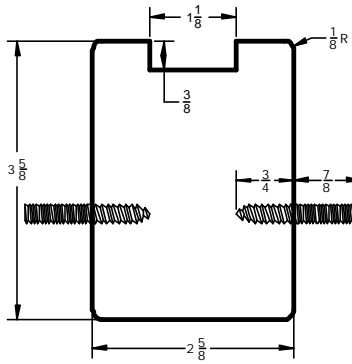
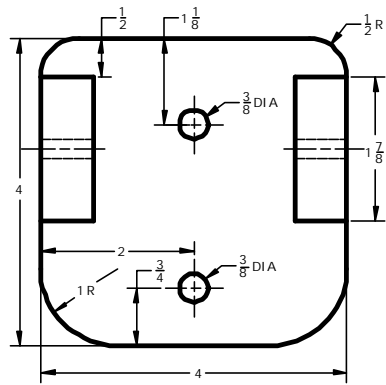


Note: Held down with 3/8" DIA. x 1 1/4" long carriage bolts with head grinded with two flats to fit in Bee Line B-72 Mini channel.



Low Toolrest (Grinder)

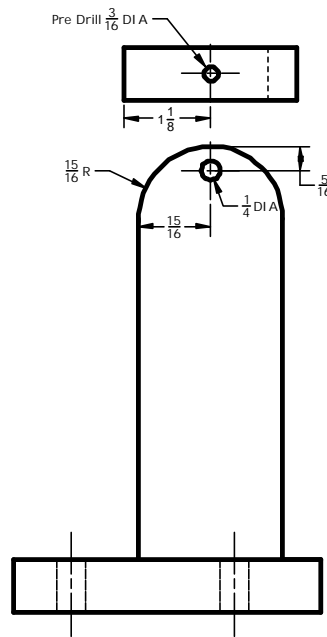
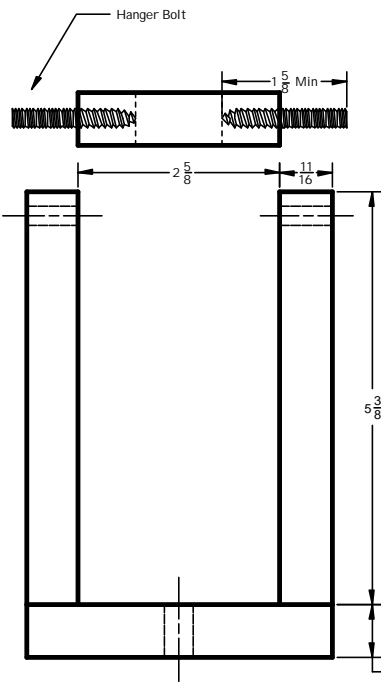
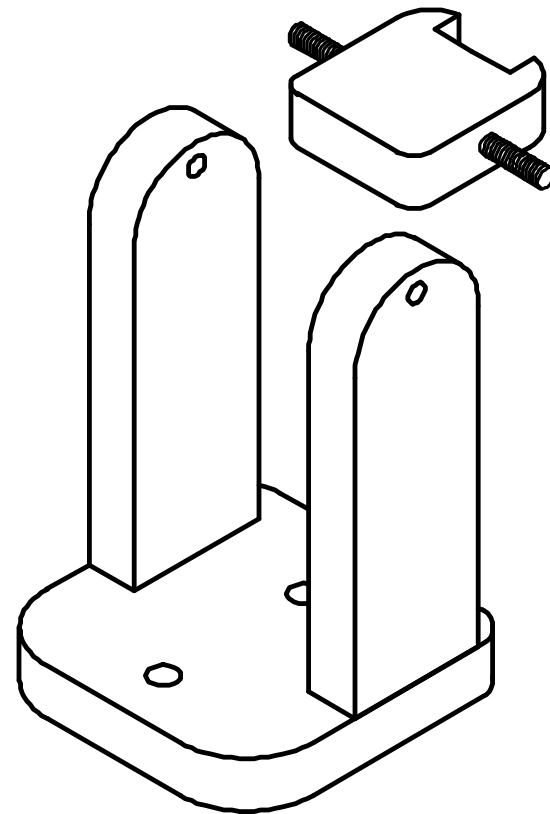
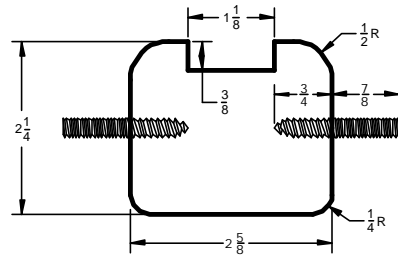
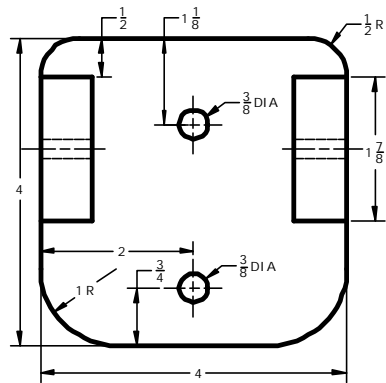
Jean Michel	1" = 2" In Deltacad	2001-11-20
Tool rest for scrapers on pivoted holder. Jig rest for both T holders.		
Baltic Birch 11/16" (18mm)	1 of 1	



Note: Held down with 3/8" DIA. x 1 1/4" long carriage bolts with head grinded with two flats to fit in Bee Line B-72 Mini channel.

High Toolrest (Grinder)		
Jean Michel	1" = 2.5" In Deltacad	2001-11-20
Toolrest for scrapers on fixed T holder.		
Baltic Birch 11/16" (18mm)		1 of 1

NOTE: The Flat Rest is hinged to it's mounts with Hanger Bolts, they are 1/4" wood screws that have a machined bolt threaded head 1/4"-20 with wing nuts.



Note: Held down with 3/8" DIA. x 1 1/4" long carriage bolts with head grinded with two flats to fit in Bee Line B-72 Mini channel.

High Toolrest (8" Grinder)

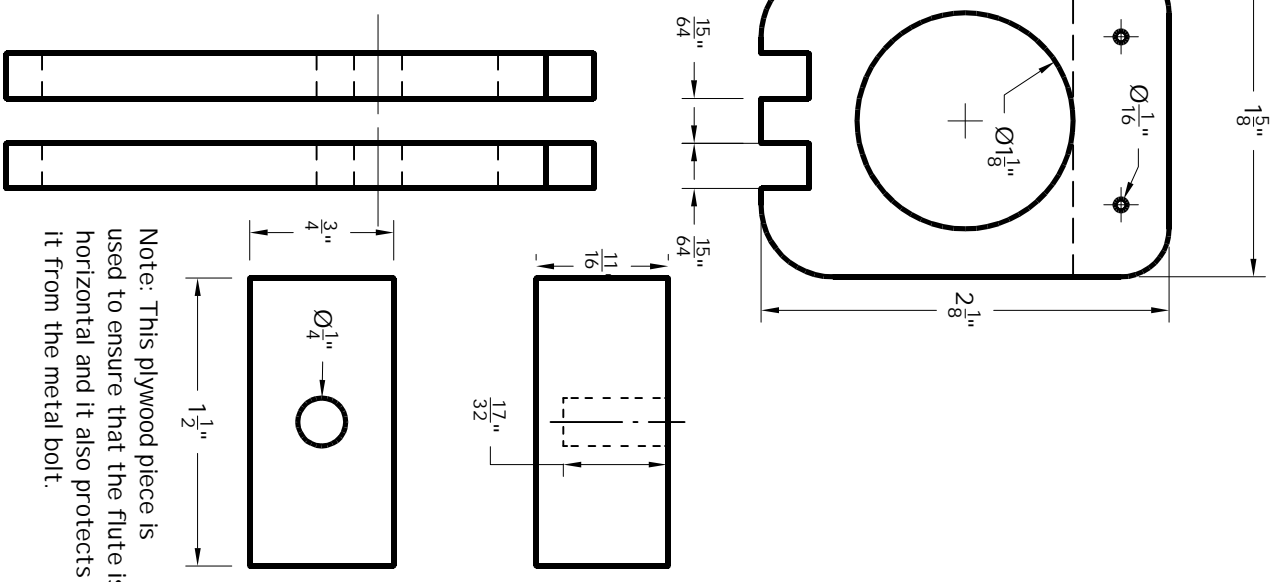
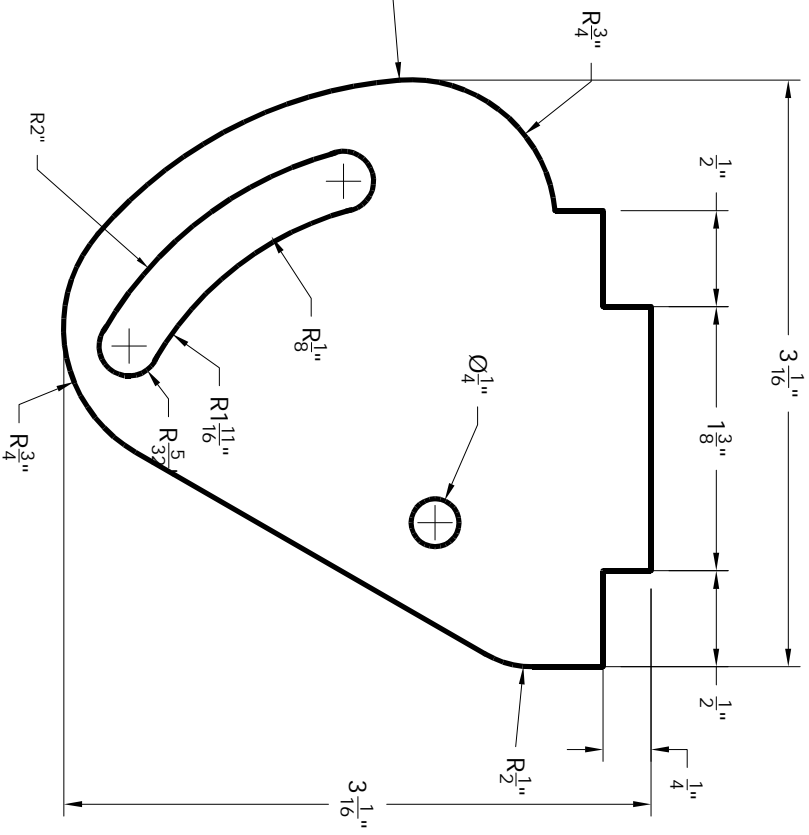
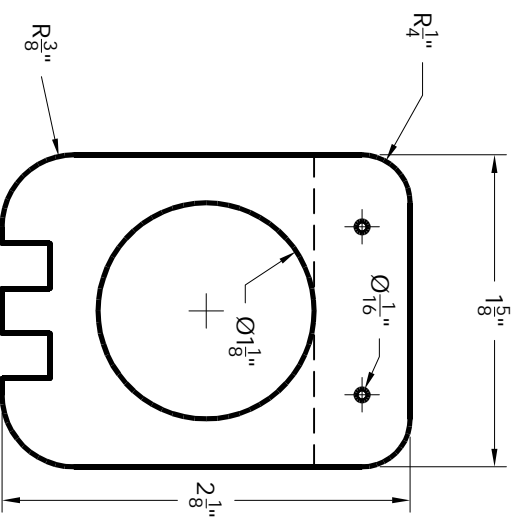
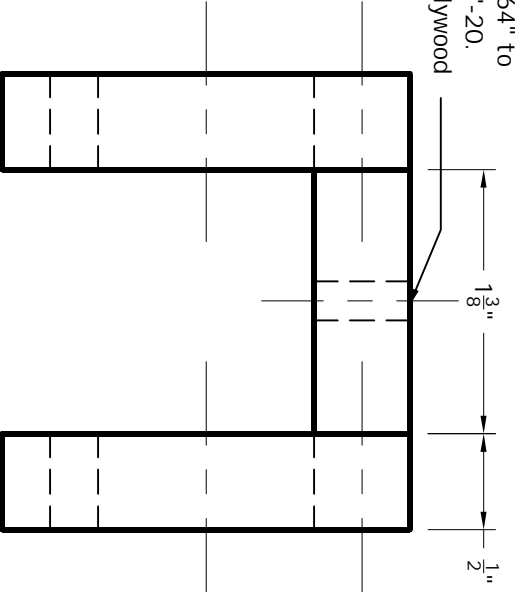
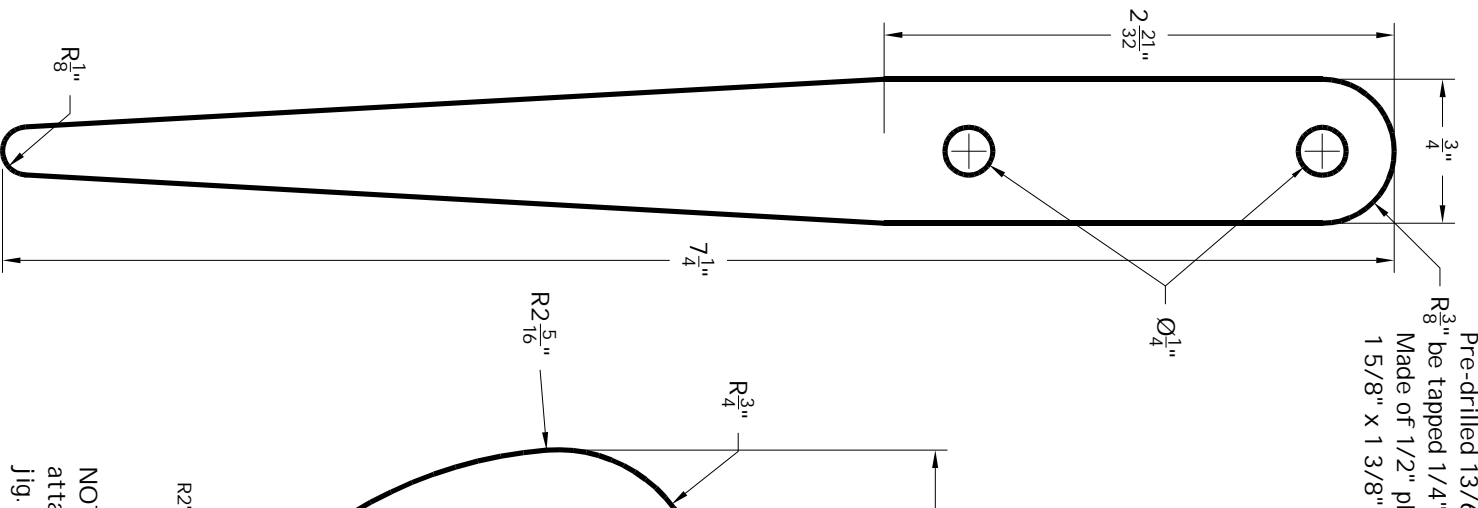
Jean Michel | 1" = 2.5" | 2002-03-15
In Deltacad

High Flat Toolrest for 8" Grinder

Baltic Birch 11/16" (18mm)

1 of 1

Pre-drilled 13/64" to R₈³" be tapped 1/4"-20.
Made of 1/2" plywood
1 5/8" x 1 3/8"



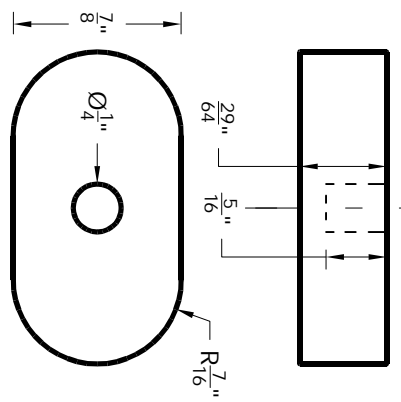
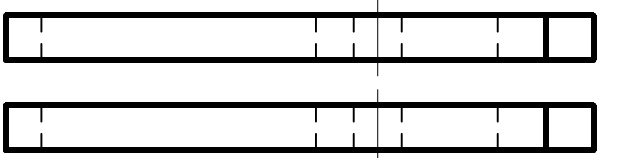
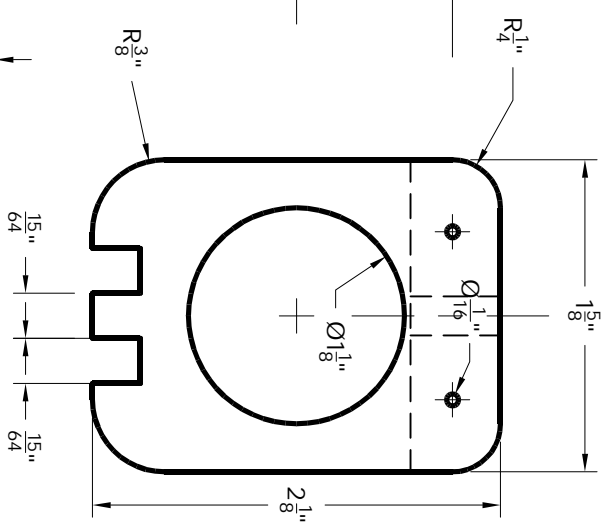
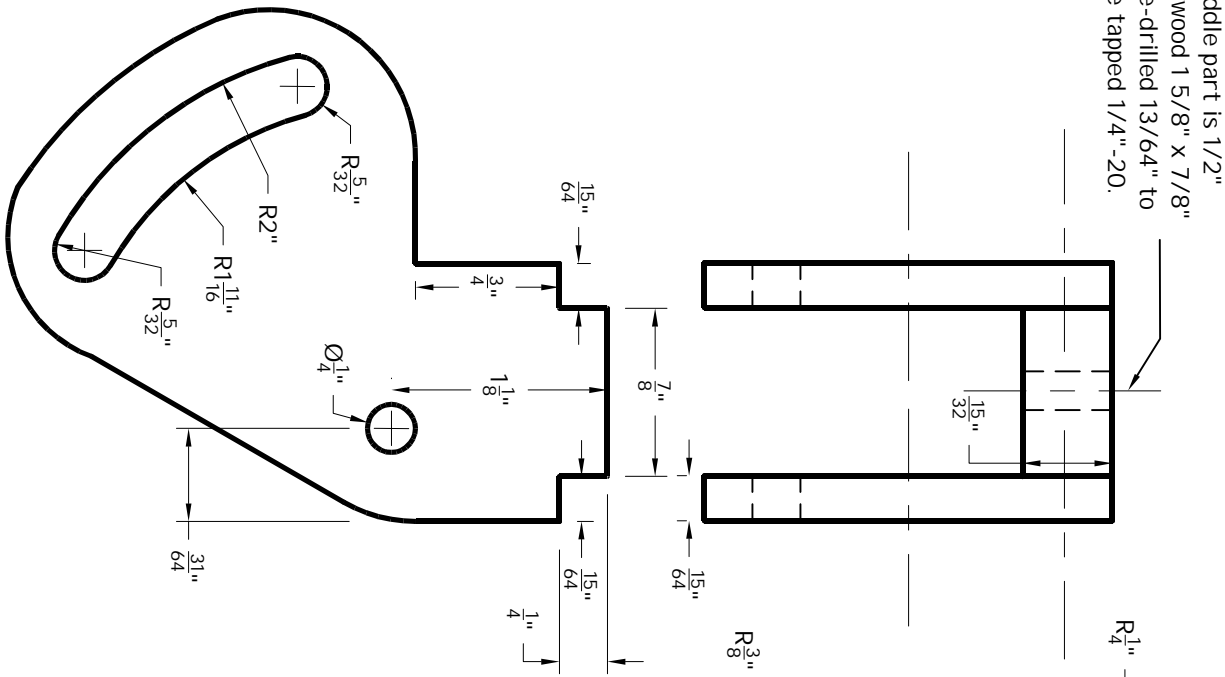
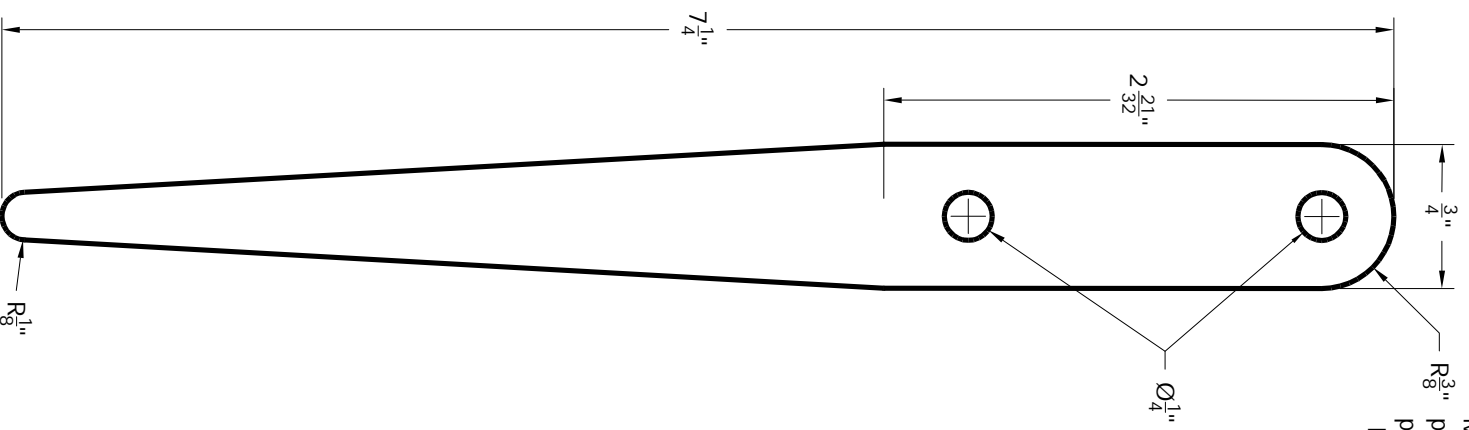
Note: This plywood piece is used to ensure that the flute is horizontal and it also protects it from the metal bolt.

NOTE: Try to make parts that are the same at the same time attached together to make both pieces identical to have a straight jig. (Like the two sides & two ends)

Reg. Home Made Grinding Jig

Jean Michel	1" = 1"	2001-11-25
Jig to grind bowl and spindle gouges. (dif. grinds)		
Baltic Birch Ply 1/2", 1/4", 3/4" nom.		1 of 1

Middle part is 1/2" plywood 1 5/8" x 7/8" pre-drilled 13/64" to be tapped 1/4"-20.



Note: This plywood piece is used to ensure that the flute is horizontal and it also protects it from the metal bolt.

NOTE: Try to make parts that are the same at the same time attached together to make both pieces identical to have a straight jig. (Like the two sides & two ends)

This shorter Jig was made to be able to grind the bevel of shorter gouges. Gaining 3/4" and a little more space to let the handle come closer to the jig in the back.

Short Home Made Grinding Jig

Jean Michel	1" = 1"	2002-04-26
Jig to grind bowl and spindle gouges. (dif. grinds)		
Baltic Birch Ply 1/2" and 1/4" nominal		1 of 1